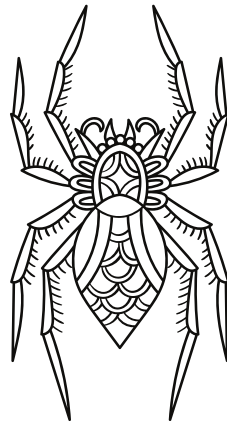


# Little Miss Muffet



Piano

Musical notation for the first system of 'Little Miss Muffet'. It consists of a grand staff with a treble clef and a bass clef. The key signature has one flat (B-flat), and the time signature is 3/4. The melody in the treble clef starts with a quarter note G4, followed by quarter notes A4, B4, and C5. The bass clef accompaniment consists of a single half note G3.

5

Pno.

Musical notation for the second system of 'Little Miss Muffet', starting at measure 5. The treble clef melody continues with quarter notes D5, E5, and F5, followed by a half note G5. The bass clef accompaniment consists of a single half note G3.

9

Pno.

Musical notation for the third system of 'Little Miss Muffet', starting at measure 9. The treble clef melody continues with quarter notes G5, A5, and B5, followed by quarter notes C6, B5, and A5. The bass clef accompaniment consists of a half note G3.

13

Pno.

Musical notation for the fourth system of 'Little Miss Muffet', starting at measure 13. The treble clef melody continues with quarter notes G5, A5, and B5, followed by a half note C6. The bass clef accompaniment consists of a half note G3.