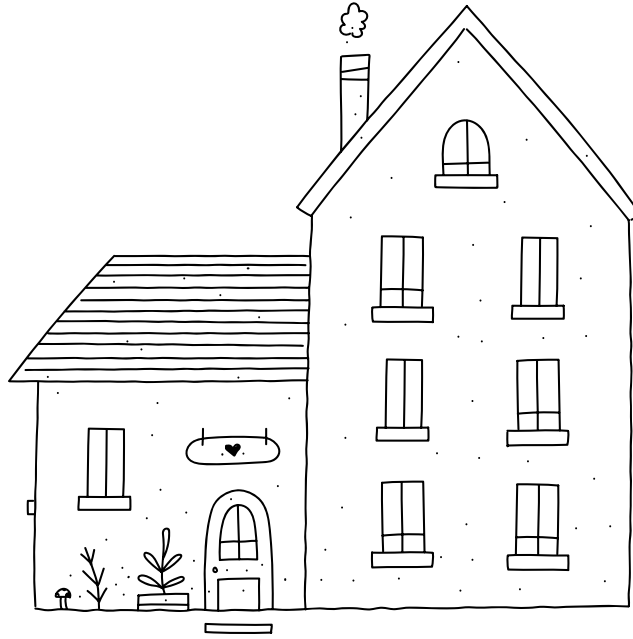


This is the House that Jack Built

Musical notation for the first system. It consists of a treble clef staff and a bass clef staff. The treble staff begins with a treble clef, a key signature of one flat (B-flat), and a common time signature. The melody starts with a quarter note G4, followed by quarter notes A4, B4, and C5. There are dynamic markings: *mf* *let ring* and *st*. The bass staff contains a simple accompaniment of quarter notes.Musical notation for the second system. It consists of a treble clef staff and a bass clef staff. The treble staff continues the melody with quarter notes D5, E5, and F5. Chord markings *F5* and *G5* are placed above the staff. The bass staff continues the accompaniment.

1st Verse
w/Rhy. Fig. 1 (5 times)
F5 *G5* *F5* *G5*

Musical notation for the third system. It consists of a treble clef staff and a bass clef staff. The treble staff contains the lyrics: "O - pen door, so I walk in - side. Close my eyes,". Chord markings *F5* and *G5* are placed above the staff. The bass staff continues the accompaniment.

Rhy. Fig. 1A

Musical notation for the fourth system. It consists of a treble clef staff and a bass clef staff. The treble staff shows a rhythmic figure with quarter notes and rests. The bass staff continues the accompaniment.